

Monton Office

0161 789 8383
222 Monton Road, Monton
M30 9LJ
@homeinmonton



Flat B 35, North Lonsdale Street Stretford Manchester M32 0PG

£795 Per calendar month

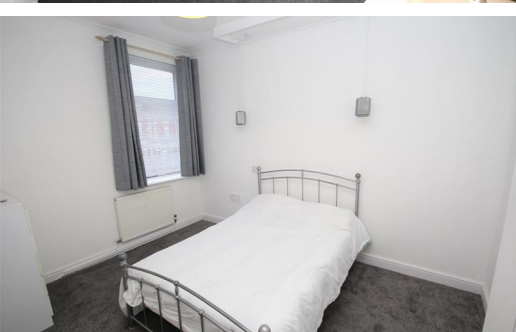
ONE BEDROOM SELF CONTAINED FLAT!! AVAILABLE 27th APRIL ONWARDS !! HOME ESTATE AGENTS are pleased to offer for rent this first floor flat located in the heart of Gorse hill and available now. In brief the property comprises of, entrance hall, lounge, kitchen, bedroom and bathroom. The property also has the option of renting a garage to the rear. Located close to good local amenities and just a short commute into Manchester city centre, Media city and the Trafford centre with great transport links including the M60 Motorway network and the Metro-link station. To arrange a viewing call HOME estate agents 0161 789 8383.

- AVAILABLE 27th APRIL ONWARDS
- Kitchen
- Good local amenities
- ONE BEDROOM FLAT
- Bedroom
- Great transport links
- Lounge
- Bathroom
- POPULAR LOCATION

LOCAL EXPERTS THAT GET YOU MOVING

 www.homeestateagents.com

LETTINGS INFO
Council Tax Band - A
EPC Rating - D



LOCAL EXPERTS THAT GET YOU MOVING

 www.homestateagents.com



Registered Address Vantage House, East Terrace Business Park, Euxton Lane, Euxton PR7 6TB - England
Company Registration numbers Monton - 9262084 Urmston - 04331861 Stretford - 08259553




LOCAL EXPERTS THAT GET YOU MOVING

 www.homeestateagents.com



Registered Address Vantage House, East Terrace Business Park, Euxton Lane, Euxton PR7 6TB - England
Company Registration numbers Monton - 9262084 Urmston - 04331861 Stretford - 08259553

Energy Efficiency Rating		
	Current	Potential
<i>Very energy efficient - lower running costs</i>		
(92 plus) A		
(81-91) B		
(69-80) C		
(55-68) D		
(39-54) E		
(21-38) F		
(1-20) G		
<i>Not energy efficient - higher running costs</i>		
England & Wales	EU Directive 2002/91/EC	

Environmental Impact (CO ₂) Rating		
	Current	Potential
<i>Very environmentally friendly - lower CO₂ emissions</i>		
(92 plus) A		
(81-91) B		
(69-80) C		
(55-68) D		
(39-54) E		
(21-38) F		
(1-20) G		
<i>Not environmentally friendly - higher CO₂ emissions</i>		
England & Wales	EU Directive 2002/91/EC	



LOCAL EXPERTS THAT GET YOU MOVING

 www.homestateagents.com



Registered Address Vantage House, East Terrace Business Park, Euxton Lane, Euxton PR7 6TB - England
 Company Registration numbers Monton - 9262084 Urmston - 04331861 Stretford - 08259553